

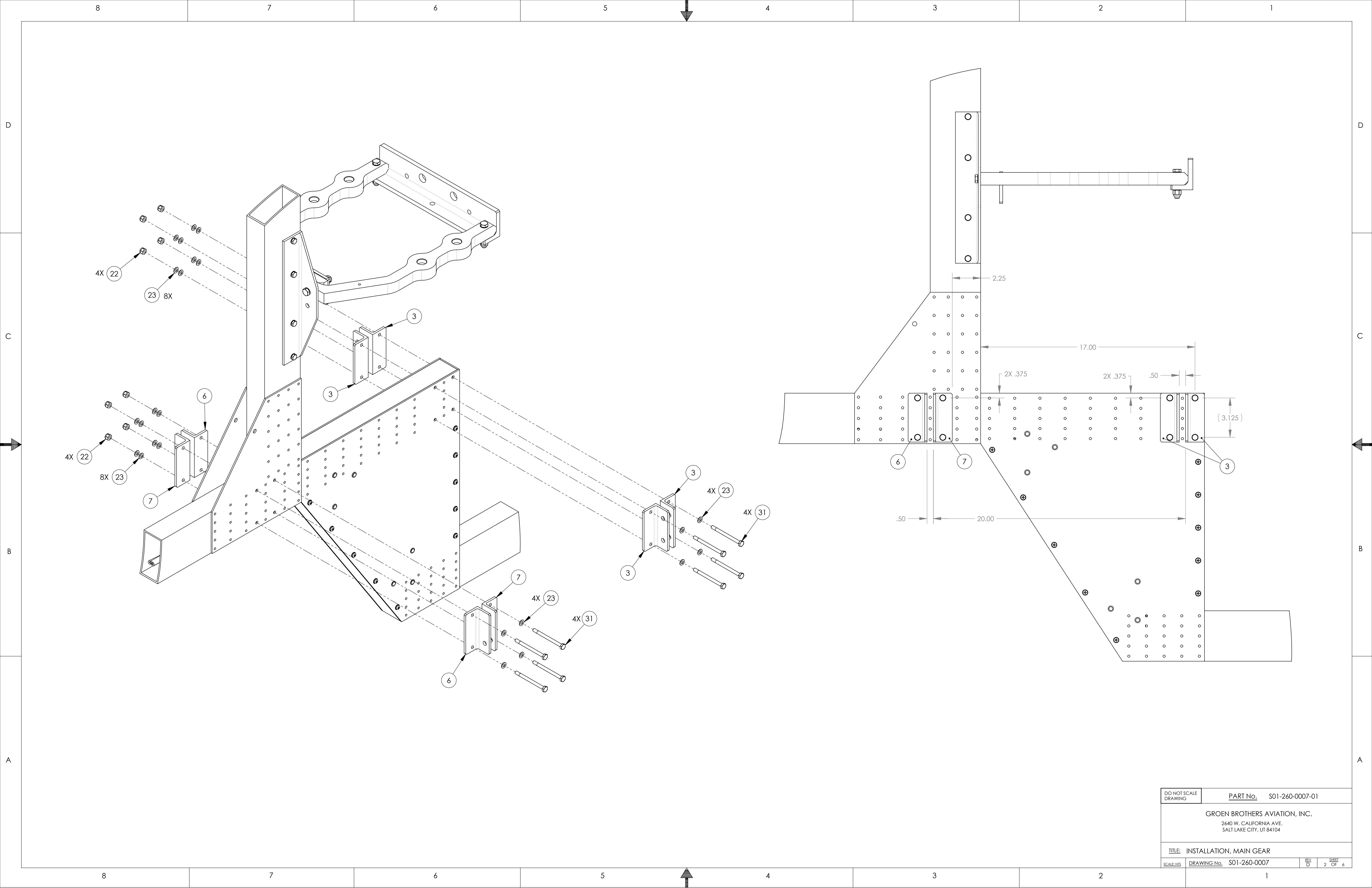
REVISION HISTORY						
REV	DESCRIPTION	DATE	BY	CHK	APP	
A	ECH 4024 - INITIAL RELEASE	12-15-05				JVDW
B	ECH 4121 - REVISED FASTENER QTY. ITEMS 36,39,42	03-23-06	GC	EO		JVDW
C	ECH 4158 - CHANGED FASTENER, ADDED WASHERS	05-19-06		JBJ	EO	JVDW
D	ECH 4368 - CHANGED BOLTS, ADDED WASHERS	02-16-07	GC			JVDW
D	ECH 4390 - CHANGED TO LONGER BOLTS	03-16-07	RP			JVDW

ITEM NO.	QTY.	PART NO.	DESCRIPTION	MATERIAL	WEIGHT
1	1	S01-260-2003-01	AXLE/BRAKE, MAIN WHEEL L/H	STEEL	3.822 LBS
2	1	S01-260-2003-02	AXLE/BRAKE, MAIN WHEEL R/H	STEEL	3.822 LBS
3	4	S01-260-4006-01	BRACKET, ANGLE	ALUMINUM	.203 LBS
4	8	S01-260-4015-01	SPACER	ALUMINUM	.009 LBS
4.	4	S01-260-4015-05	SPACER	ALUMINUM	.009 LBS
6	2	S01-260-4030-02	BRACKET, ANGLE	ALUMINUM	.203 LBS
7	2	S01-260-4030-01	BRACKET, ANGLE	ALUMINUM	.203 LBS
8	2	S01-260-4042-01	STRUT, MAIN GEAR	STEEL	3.713
9	2	S01-260-4042-02	STRUT, MAIN GEAR	STEEL	3.713
10	2	S01-260-4048-01	UPPER STRUT, DAMPENER	STEEL	.911 LBS
11	2	S01-260-4049-01	STRUT, LOWER DAMPENER	STEEL	.454 LBS
12	4	S01-260-4050-01	SPACER	STEEL	.031 LBS
13	2	S01-260-4051-01	TUBE, SLOTTED	STEEL	1.275 LBS
14	2	S01-260-4052-01	INSERT, THREADED	STEEL	.276 LBS
15	4	S01-260-4053-01	WASHER	ALUMINUM	.327 LBS
16	6	S01-260-4054-01	WASHER, DAMPENER	6061-T6 ALUMINUM	.042 LBS
17	8	S01-260-4055-01	BUSHING, DAMPENER	RUBBER	.422 LBS
18	4	SS1216-8	BUSHING	BRONZE	0.013 LBS
19	28	AN960-616L	WASHER	STEEL	.002 LBS
20	12	MS20365-624	NUT, SELF-LOCKING	STEEL	.020 LBS
21	4	AN6-14A	BOLT	STEEL	.104 LBS
22	8	MS20365-428	NUT, SELF-LOCKING	STEEL	.010 LBS
23	24	AN960-416L	WASHER	STEEL	.001 LBS
24	6	AN6-17A	BOLT	STEEL	.104 LBS
25	12	AN960-516L	WASHER	STEEL	.001 LBS
26	12	AN960-716L	WASHER	STEEL	.003 LBS
27	4	AN960-816L	WASHER	STEEL	.004 LBS
28	6	MS20365-524	NUT, SELF-LOCKING	STEEL	.013 LBS
29	6	MS20365-720	NUT, SELF-LOCKING	STEEL	.023 LBS
30	2	MS20365-820	NUT, SELF-LOCKING	STEEL	.047 LBS
31	8	AN4-31A	BOLT	STEEL	.021 LBS
32	6	AN5-34A	BOLT	STEEL	.089 LBS
33	2	AN6-24A	BOLT	STEEL	.104 LBS
34	6	AN7-21A	BOLT	STEEL	.096 LBS
35	2	AN8-22A	BOLT	STEEL	.319 LBS
36	2	CB060812	BUSHING	BRONZE	0.039 LBS
37	2	AN316-8	JAM NUT	STEEL	.025 LBS
38	4	AZUSA-1105	WHEEL	ALUMINUM	2.874 LBS
39	2	AZUSA 2211	4 1/2" BRAKE DRUM	STEEL	0.698
40	4	AZUSA-8229, 8257	BEARING, WHEEL (MATCHED SET)	STEEL	.2 LBS
1.	41	2 AZUSA 7125	TUBE, INNER (BENT STEM)	RUBBER	0.781 LBS
3.	42	2 TIRE, (15-600 X 6)	TIRE, RUBBER	RUBBER	2.911 LBS
2.	43	2 VXM8G	BEARING, ROD END	STEEL	0.391 LBS
	44	8 McM-C 98017A220	.75 FLAT WASHER MIL. SPEC. THIN	STAINLESS STEEL	
	45	2 McM-C 95030A270	3/4-16 CASTLE NUT	STEEL	0.104 LBS
	46	2 MS24665-357	COTTER PIN	STEEL	.005 LBS

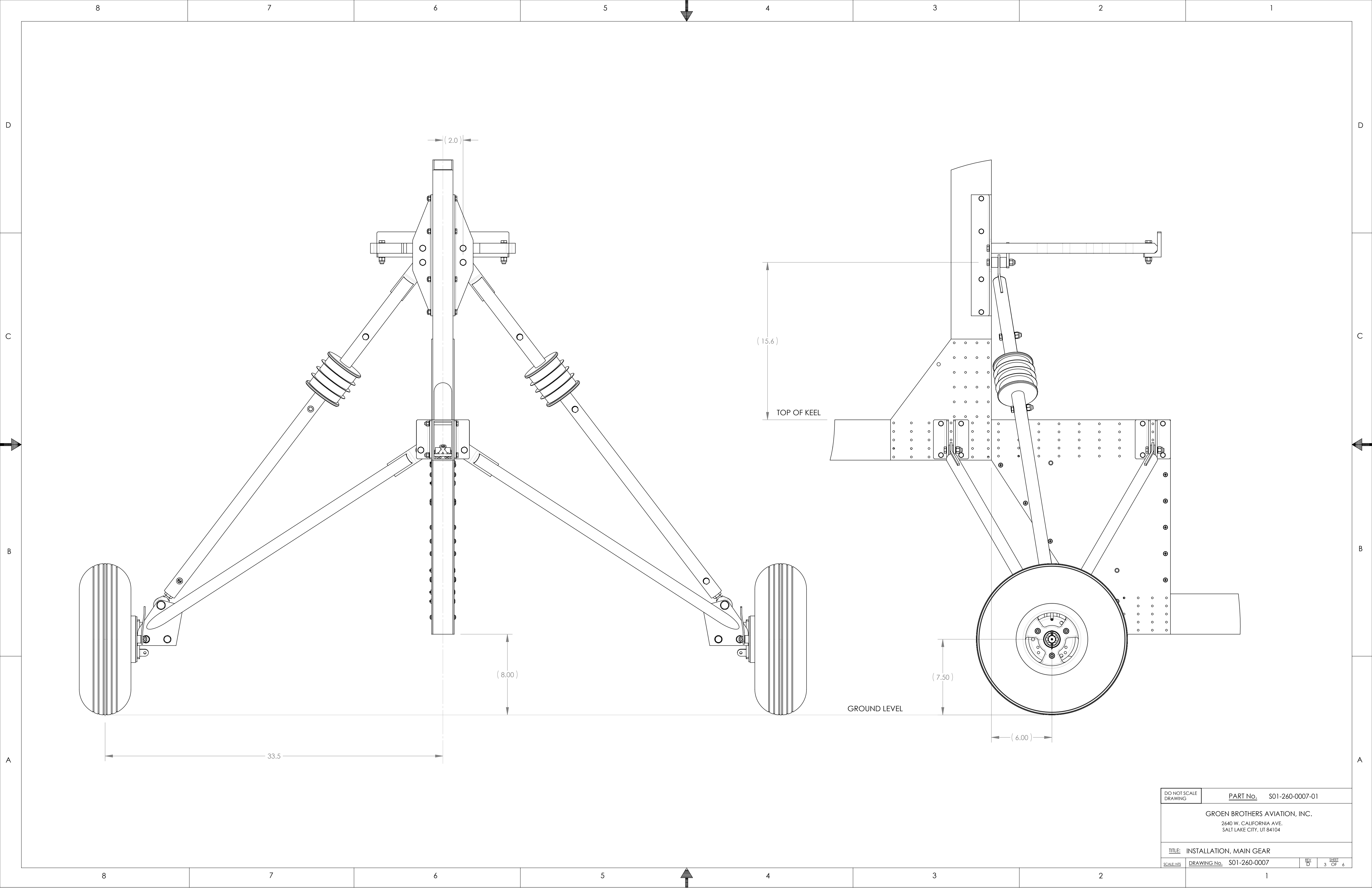
NOTES:

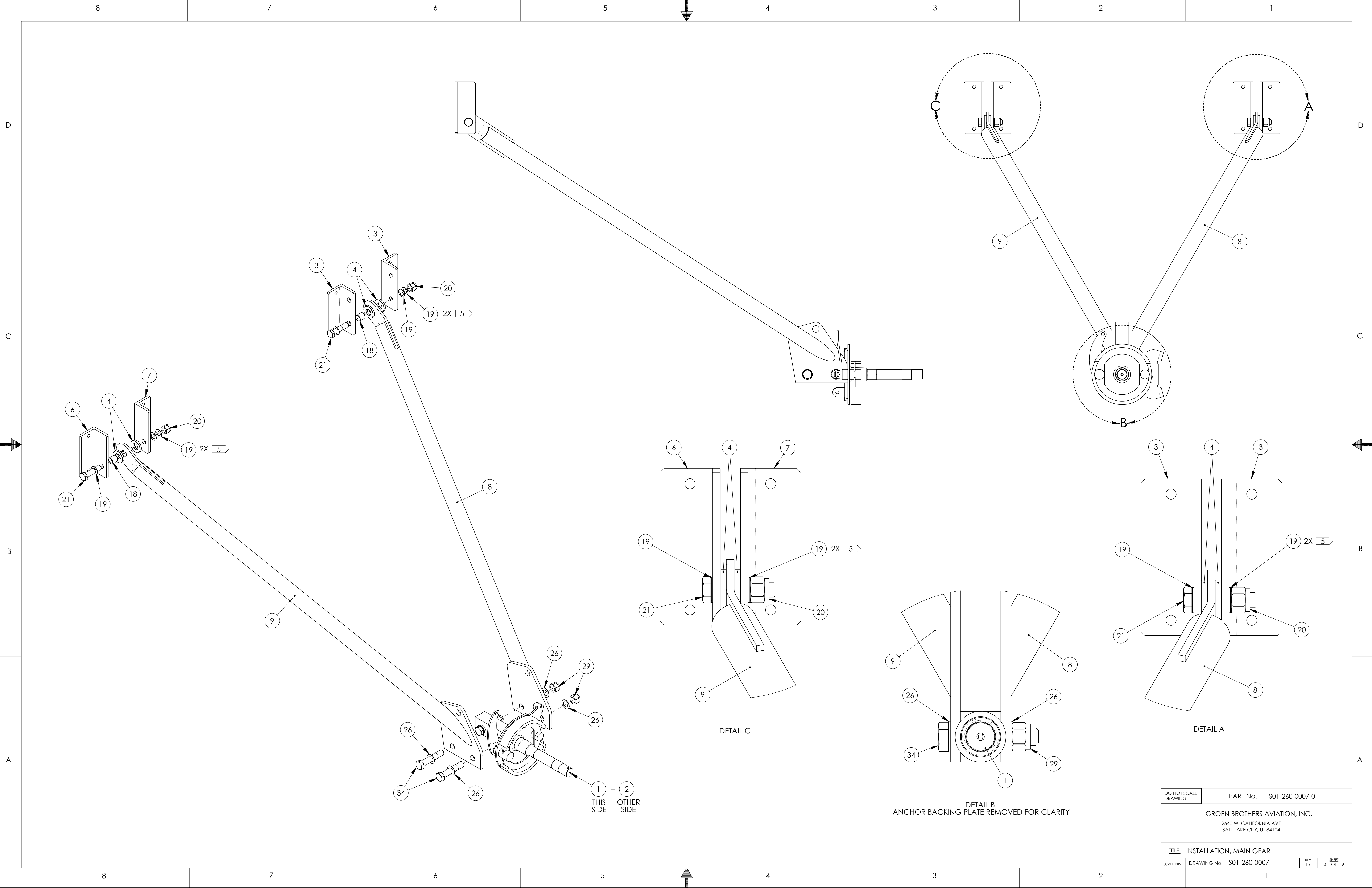
1. BEARINGS MUST BE TAPERED ROLLER BEARINGS. USE AZUSA #1105 OR EQUIVALENT.
2. TIRE MUST BE 15 X 6.00 - 6 PLY.
3. INNER TUBE MUST HAVE ANGLED VALVE STEM. USE AZUSA #7125 OR EQUIVALENT.
4. MAY ALSO USE 1X S01-260-4015-01 AND 1X S01-260-4015-07 PER SIDE INSTEAD OF 2X S01-260-4015-05 PER SIDE.
5. USE ADDITIONAL WASHERS TO ACHIEVE PROPER GRIP LENGTH.

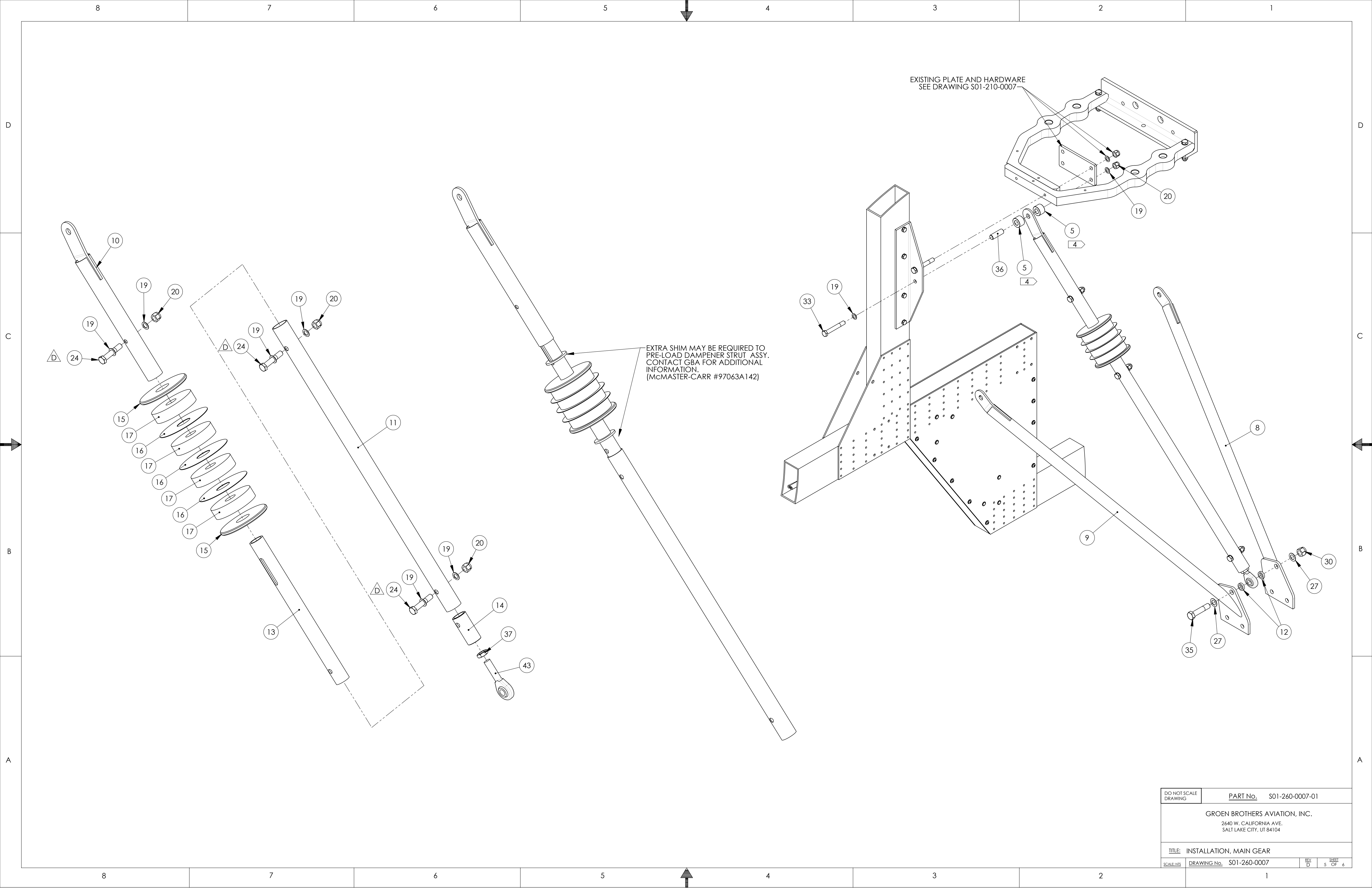
UNLESS OTHERWISE SPECIFIED: INTERIOR RADI: .020-.040 BREAK ALL CORNERS .005 - .015 125 / SURFACE FINISH AS PER ASME B46.1/1996		INFORMATION CONTAINED IN THIS DRAWING IS PROPRIETARY AND IS NOT TO BE USED IN ANY WAY THAT IS HARMFUL OR DETRIMENTAL TO THE INTERESTS OF GROEN BROTHERS AVIATION, INC.		STANDARD UNITS LENGTH = INCHES WEIGHT = U.S. LBS.		STANDARD TOLERANCES DECIMALS X = ±.1 XX = ±.03 XXX = ±.010		ANGULAR MACHINED = ±1° FORMED = ±2°		DIMENSIONS/TOLERANCING PER ASME Y14.5M/1994. PROCESSSES PER GPS 0100.	
PER GMS		NEXT HIGHER ASSEMBLY DRAWING No. S01-110-0002 TITLE SPARROWHAWK II		APPROVED DRAWN: J. KLEN CHECKED: DESIGN: ANALYSIS: PRODUCTION: QUALITY: PROJECT ENGINEER: CHIEF ENGINEER:		DATE: 12-08-05 DATE: DATE: DATE: DATE: DATE: DATE: 12-15-05		DO NOT SCALE DRAWING		WEIGHT 59.94 LBS	
D		MODEL		SPARROWHAWK		PART No.		S01-260-0007-01		GROEN BROTHERS AVIATION, INC. 2640 W. CALIFORNIA AVE. SALT LAKE CITY, UT 84104	
TITLE:		INSTALLATION, MAIN GEAR		SCALE: NTS		DRAWING No.		S01-260-0007		REV D	
										SHEET 1 OF 6	



DO NOT SCALE DRAWING	PART No. S01-260-0007-01		
GROEN BROTHERS AVIATION, INC. 2640 W. CALIFORNIA AVE. SALT LAKE CITY, UT 84104			
TITLE: INSTALLATION, MAIN GEAR			
SCALE: NTS	DRAWING No. S01-260-0007	REV D 2	SHEET OF 6







DO NOT SCALE DRAWING	PART No. S01-260-0007-01		
GROEN BROTHERS AVIATION, INC. 2640 W. CALIFORNIA AVE. SALT LAKE CITY, UT 84104			
TITLE: INSTALLATION, MAIN GEAR			
SCALE: NTS	DRAWING No. S01-260-0007	REV D 5	SHEET OF 6

