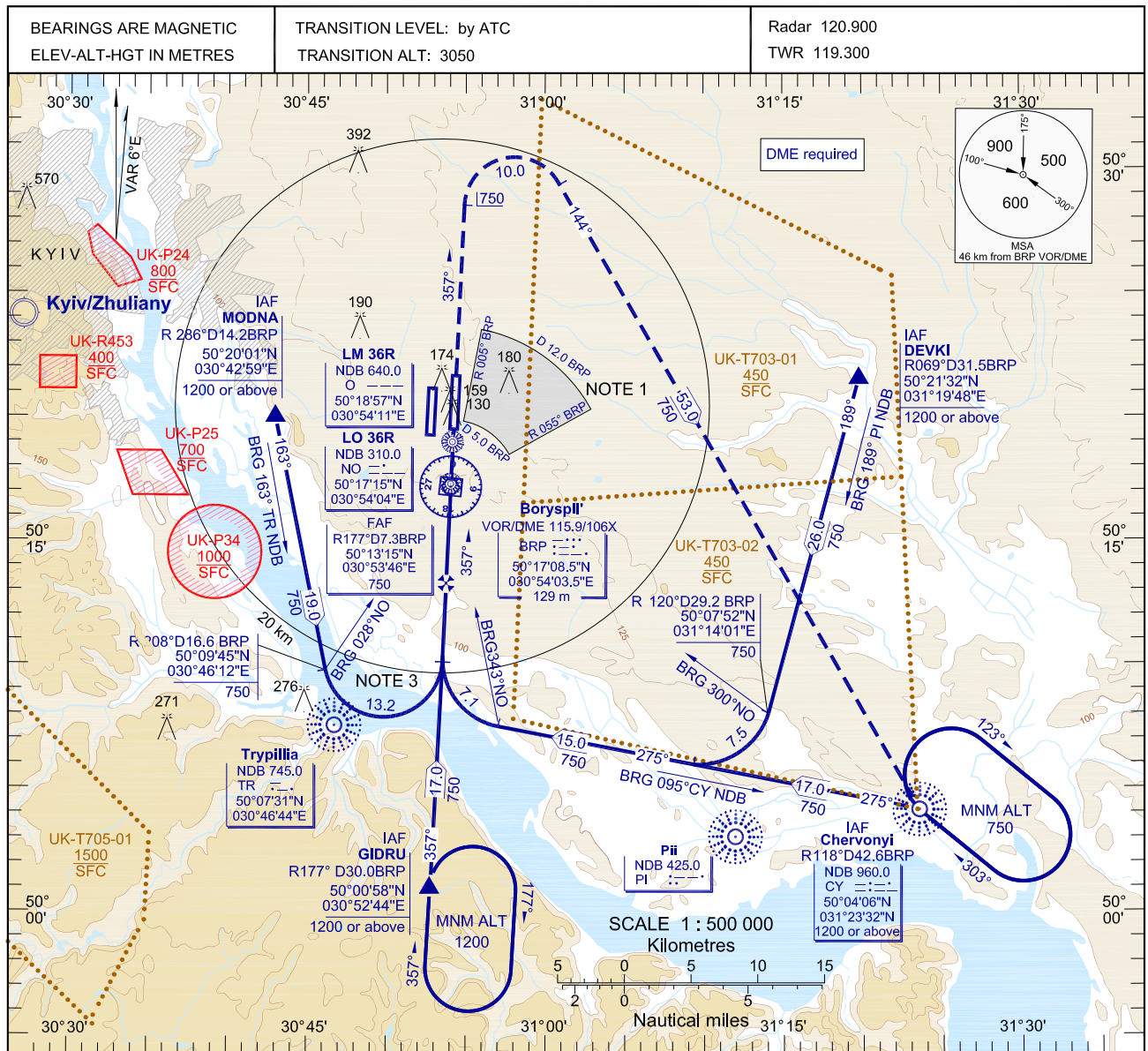


# INSTRUMENT APPROACH CHART (IAC)-ICAO

AD ELEV 130 m

KYIV/Boryspil'  
NDB RWY 36R

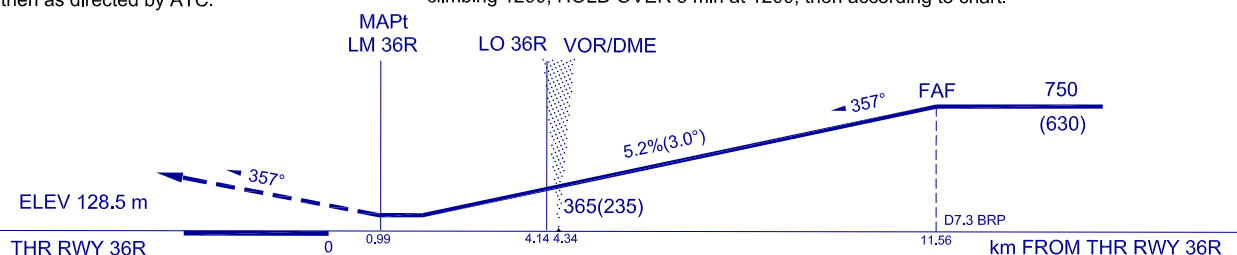


MISSED APPROACH:

Climb on RWY heading to 750,  
then as directed by ATC.

MISSED APPROACH RADIO COMM FAILURE:

Climb on RWY heading to 750, turn RIGHT on track 144°, to IAF CY NDB, climbing 1200, HOLD OVER 5 min at 1200, then according to chart.



OCA/H		A	B		C		D	<b>NOTE:</b> 1. Visual manoeuvring (circling) and visual approach in the sector below 750 not authorised. 2. IFR FLIGHTS flying Visual Approach: in order to remain within controlled airspace an aircraft carrying out visual approach shall maintain altitude of at least 750 until D8.0 BRP DME. 3. MAX IAS 220 kt (407 km/h), bank=20°.		
Straight-in Approach	O NDB	240(110)	240(110)		240(110)		240(110)			
Circling		265(135)	280(150)		310(185)		340(210)			
GROUND SPEED		km/h	150	180	210	240	270	300	330	360
FAF-MAPt 10567 m		min:s	4.14	3.31	3.01	2.39	2.21	2.07	1.55	1.46
RATE OF DESCENT		m/s	2.2	2.6	3.1	3.5	3.9	4.4	4.8	5.2